



2018 Championship Series May 26 – September 23, 2018

Wayzata Yacht Club (WYC) - Apostle Islands Station (AIS)
Bayfield Wisconsin, USA

SAILING INSTRUCTIONS

The notation [DP] in a rule in the Sailing Instructions means that the penalty for a breach of that rule may, at the discretion of the protest committee, be less than disqualification.

The notation [NP] in a rule in the Sailing Instructions means that breaches in this rule will not be grounds for a protest by a boat. This changes RRS 60.1 (a).

- 1. Rules.** The races will be governed by the rules as defined in the *Racing Rules of Sailing*.
 - 1.1** Each boat must also comply with the following:
 - 1.1.1** All U.S. Coast Guard and other applicable governmental laws, rules and regulations.
 - 1.1.2** The 2018 AIS Safety Equipment Requirements
 - 1.2** The following Racing rules will be changed as follows:
 - 1.2.1** SI 4.2 changes RRS Race Signal AP
 - 1.2.2** SI 8.1.4 changes RRS 18 and RRS 28 and adds the definition of a waypoint
 - 1.2.3** SI 10.5.1 changes RRS 29.1
 - 1.2.4** SI 10.5.2 changes RRS 29.2
 - 1.2.5** SI 12.1 changes RRS 44.1
 - 1.2.6** SI 15.2 changes RRS 35, A4 and A5
 - 1.2.7** SI 15.3 changes RRS A2.1
- 2. Notice to Competitors.**
 - 2.1** Official notices to competitors will be posted at the dock office of the Apostle Islands Marina (107 Manypenny Ave, Bayfield) and the relevant Yachtscoreing event page.
- 3. Changes to Sailing Instructions.**
 - 3.1** Changes to the SIs will be posted on the Official Notice Board and the relevant Yachtscoreing event page by 0900 hrs; changes to the SIs will also be announced approximately two hours prior to the warning signal for the first race of the day by the RC on VHF Radio (VHF), SI 17. Any change to the schedule of races will be posted by 2000 hrs on the day before it will take effect except:



- 3.1.1** Change of race scheduled by adding second race for Mid-Distance, JAM, and Multihull fleets may be announced via VHF on that day.
- 3.2** In accordance with RRS 90.2(c) the RC may alter these SIs on the water by hailing the fleets and making the change on VHF.
- 4. Signals made ashore**
- 4.1** Signals made ashore will be displayed on the RC Boat at dock at the Blackhawk Boat Yard (East Dock Road, Bayfield)
- 4.2** When flag AP is displayed ashore, '1 minute' is replaced with 'not less than 1 hour' in the Race Signal AP. This changes RRS Race Signal AP.
- 5. Schedule of Races.**
- 5.1** The schedule of races is listed in Appendix A.
- 5.2** The sailing of subsequent races for the Buoy Fleet will be announced by RC on VHF.
- 5.3** The sailing of subsequent races for the MD/JAM/Multihull Fleets will be announced via VHF during the day's morning radio call.
- 6. Class Flags.**
- 6.1** Class flags shall be flown from the backstay. Any boats without a backstay shall fix the class flag to the end of their boom. [DP]
- 6.2** Classes will be defined and posted on the Official notice board and the relevant Yachtscoreing event page prior to first race of the series. Class flags will be available for collection from the Apostle Islands Dock Office until 1700 of the day before the first race of the series, and up to 1000 hrs on the first day of the series.
- 7. Racing Areas.**
- 7.1** Racing may be held anywhere in, near or around the Apostle Islands. Appendix B shows the partial area in which racing may be held.
- 8. Marks**
- 8.1** Marks may be:
- 8.1.1** Temporary buoys (which may be red, orange, white or green and be in the form of cylinders, spheres, or tetrahedrons),
- 8.1.2** Islands,
- 8.1.3** Government navigation marks/buoys,
- 8.1.4** Waypoints as defined by latitude and longitude coordinates, that the course requires a boat to leave on a specified side. Any use of a waypoint shall be in accordance with World Sailing Appendix WP. Appendix WP can be found at www.wyc.org/ais and the relevant Yachtscoreing event page. Appendix WP changes RRS 18 and RRS 28 and adds a definition of a waypoint.



- 8.2** All boats will obey all government navigation marks/buoys along the rhumb line while racing, except if the navigation mark/buoy is a mark of the course, when such navigation mark/buoy may be rounded pursuant to RC instructions.

9. The Courses.

- 9.1** Course diagrams for the Buoy Fleet are included in Appendix C. The specific windward mark that each class shall round will be posted with the course description by the Race Committee.
- 9.2** Appendix B shows the approximate location of the marks that might be used to define the course for the MD, JAM, and Multihull fleets, or when all fleets sail a medium distance course.
- 9.3** Courses will be posted on the display board on RC boat. They will show the course, the order in which the marks are to be passed, and the side on which each mark is to be passed. The RC will also announce the course on the official VHF Radio Channel.
- 9.4** The approximate compass bearing and distance from the starting line to Windward Mark will be displayed from RC Boat.

10. The Start

- 10.1** Start order: Jib-and-Main Fleet, Mid-Distance Fleet, Buoy Fleet, Multihull.
- 10.2** Races will be started using RRS 26. The warning signal of each succeeding class may be made with the start signal of the preceding class.
- 10.3** Boats whose warning signal has not been made shall avoid the starting area during the starting sequence for other races. [DP]
- 10.4** The starting line will be between a staff displaying an orange flag on an RC Signal Boat and course side of the starting mark.
- 10.5** Recalls will be signaled as follows:
- 10.5.1** When signaling an individual recall, RC shall announce via radio the sail number(s) of boat(s) identified as being OCS. This changes RRS 29.1.
- 10.5.2** When signaling a General Recall the recalled class will go to the end of the starting order. This changes RRS 29.2
- 10.6** Any boat using a sail with an alternate sail number shall report the proper sail number to the RC in writing, or via VHF hail no later than 30-minuts prior to the warning signal for the first race of the day.

11. The Finish

- 11.1** Buoy Fleet:
- 11.1.1** Will be between a staff displaying an orange flag on an RC Boat and the course side of the mark approximately perpendicular to the RC Boat.



11.2 MD/JAM/Multihull Fleets:

11.2.1 Bayfield Fishing Dock finish line may be used for all MD/JAM/Multihull Fleets. Alternatively, MD/JAM/Multihull Fleets may finish between a staff displaying an orange flag on an RC Boat and the course side of the mark approximately perpendicular to the RC Boat.

11.2.2 When Bayfield Fishing Dock is used as one mark of the finish line, the other end will be the course side of a *mark* approximately 200 feet from the end of the pier, and in a line perpendicular to the dock.

11.3 At the discretion of the Race Committee a race may be finished at a waypoint. A waypoint is defined by latitude and longitude coordinate. When finishing at a waypoint, the finish line is a line through the waypoint at a 90-degree angle to the last leg and of the shortest practical length. Boats must log their GPS finish time. Boats finishing shall also log the sail number of the boat ahead and behind their finish position if available. [DP]

12. Penalty System.

12.1 For all classes within all fleets, RRS 44.1 is changed so that RRS Appendix V1 is in effect. This changes RRS 44.1.

12.2 RRS Appendix T – Arbitration will be in effect for this series.

13. Time Limits

13.1 Buoy Fleet:

13.1.1 The time limit for the first boat of a class to finish buoy races will be 3 hours from their start signal, except when sailing a MD/JAM course where 13.2.1 will apply. Any boat within the class not finishing a race within 1 hour after the first boat of the class finishes will be scored TLE.

13.2 MD/JAM/Multihull Fleets:

13.2.1 There will be no time limit for the MD and JAM and Multihull Fleet courses. RC will be on-station (either on-the-water, at the finish line, or ashore) for 4 hours from the fleet's starting signal. Any boat finishing after 4 hours must self-report their GPS finishing time to RC or MD/JAM Liaison within 1 hour of finishing.

13.2.2 All boats retiring from a race at any time shall inform RC and will be scored RET. [DP]

13.2.3 All boats continuing to race after sunset will use every reasonable effort to report (via VHF Radio Channel 72) their GPS position on an hourly basis to other MD/JAM boats continuing to race and the MD/JAM/Multihull liaison.

13.3 All Fleets: There is no time limit for the Dobson Cup, Hulings Around Madeline, and Silver Bay race.



14. Protests and Request for Redress

- 14.1 Protest forms will be available at the official notice board.
- 14.2 For each class, the protest time limit is 90 minutes after the last boat has finished the last race of the day of each sailing event or the race committee signals no more racing today, whichever is later.
 - 14.2.1 Protests must be delivered to RC Principal Race Officer (PRO) or Chief Judge within the protest time limit.
- 14.3 Notices will be posted on the Official Notice Board as soon as reasonably possible of receiving the protest/request for redress to inform competitors of hearings in which they are parties or named as witnesses. Where reasonably possible, hearings will be scheduled for the day the protests were received and in the order the protests were received. In unusual circumstances and with sufficient notice, the Protest Committee ("PC") may schedule a hearing for a different day, time or order.
- 14.4 Failure to hear radio communication required by the RC by SIs SI 3.1 and SI 3.2; shall not be grounds for redress. This Changes RRS 62.

15. Scoring:

- 15.1 Corrected time will be determined using the PHRF Time on Distance calculation.
- 15.2 A boat that does not finish within the specified time period (SI 13) shall be scored points for the finishing place one more than the number of boats that finished in the time period. These boats will be assigned the scoring abbreviation of TLE. This changes RRS 35, A4 and A5.
- 15.3 A boats series score will be the total of all her races. This changes RRS A2.1.
- 15.4 One race is required to be completed to constitute a series.

16. Safety Regulations.

- 16.1 Each boat must comply with the following:
 - 16.1.1 All U.S. Coast Guard and other applicable governmental laws, rules and regulations. [DP]
 - 16.1.2 The 2018 AIS Safety Equipment Requirements which can be found at www.wyc.org/ais and the Yachtscoring.com page for each event. [DP]
 - 16.1.3 A boat that retires from a race shall notify the race committee as soon as possible. The Race Committee will monitor VHF. [DP]
 - 16.1.4 Personal Flotation Devices [DP]
 - 16.1.4.1 At the Start and Finish of each race, each person on board each boat is required to wear a USCG or ISO approved personal flotation device (PFD). The use of an ISO approved PFD does not negate the USCG requirement that each vessel must have at least one (1) USCG approved Type III or V life jacket for each person on board. Belt pack style PFD's are not allowed.



16.1.4.2 For any boat with only two (2) individuals on board, both individuals shall wear a life jacket at all times, except briefly while changing or adjusting clothing or personal equipment.

16.2 Abandonment Due to Weather

16.2.1 Races for individual fleets may be abandoned or postponed when the 5-minute mean wind speed exceeds 24 knots or wind gusts exceed 30 knots, as determined by PRO. If these conditions exist 90 minutes before the scheduled warning signal, signals will be made ashore. If these conditions develop less than 90 minutes prior to the scheduled warning signal start, signals may be made by RC Boat.

17. Radio Communication

17.1 All official radio communications shall be made on VHF channel 72.

17.2 Except in an emergency, a boat that is racing shall not make voice or data transmissions and shall not receive voice or data communication not available to all boats. This restriction also applies to mobile telephone, tablets, computers, and similar devices. [DP] [NP]

17.3 Boats are reminded of their obligation to maintain a radio watch on VHF Channel 16 to be compliant with USCG regulations.

18. Prizes.

18.1 1st, 2nd & 3rd place trophy prizes will be awarded for each fleet. Additional trophy prizes or awards may be awarded at the discretion of the Trophy Chairperson.

19. DISCLAIMER OF LIABILITY, WAIVER AND RELEASE OF LIABILITY

19.1 Sailing is an activity that has an inherent risk of damage and injury, including without limitation bodily injury, personal injury, permanent disability, and death. Each person (including without limitation owner, skipper, crew, spectators, officials, volunteers and others) participates in each race, social event, and/or associated activity(ies) entirely at his/her **own risk**. See RRS 4, "Decision to Race".

19.2 ORGANIZING AUTHORITY, RACE COMMITTEE, PROTEST COMMITTEE, SPONSORS, HOST CLUB AND VENUE (AND EACH OF THEIR RESPECTIVE OFFICERS, DIRECTORS, EMPLOYEES, CONTRACTORS, OFFICIALS, MEMBERS, GUESTS, VOLUNTEERS, REPRESENTATIVES AND ALL OTHER PERSONS IN THEIR CAPACITY OF ASSISTING A RACE, SOCIAL EVENT AND/OR ASSOCIATED ACTIVITIES) (COLLECTIVELY, "**RACE ORGANIZERS**") WILL NOT BE RESPONSIBLE OR LIABLE FOR ANY ACTION, CLAIM OR SUIT (COLLECTIVELY, "**CLAIMS**") OR LIABILITY, LOSS, DAMAGE, ACCIDENT OR INJURY WHATSOEVER (INCLUDING BODILY INJURY, PERSONAL INJURY, PERMANENT DISABILITY OR DEATH) (COLLECTIVELY, "**DAMAGES**") TO ANY PERSON, PROPERTY OR BOAT WHETHER CAUSED BY, ARISING OR RESULTING FROM THEIR ACT, ERROR,



OMISSION OR ALLEGED NEGLIGENCE OR MISCONDUCT, WEATHER OR SEA CONDITIONS, HAZARDS OF ANY KIND, DEFECTS OR FAILURE OF BOATS TO BE SEAWORTHY IN HULL, RIGGING OR GEAR, OR ANY ACTS, ERRORS OR OMISSIONS OR ALLEGED NEGLIGENCE OR MISCONDUCT OF **RACE ORGANIZERS** OR OTHER PARTICIPANTS OR BOATS WHICH MAY OCCUR DURING OR ARISING OUT OF OR IN CONNECTION WITH ANY RACE, REGATTA, EVENT, CRUISE, SPECTACLE, SOCIAL EVENT, RACE FACILITIES OR ANY ACTIVITY SCHEDULED, SPONSORED OR AIDED IN WHOLE OR IN PART BY ANY **RACE ORGANIZER(S)**, TO THE FULLEST EXTENT PERMITTED BY LAW.

19.3 BY PARTICIPATING, EACH PARTICIPANT (AND IN THE CASE OF CHILDREN AND MINORS, EACH PARTICIPANT'S PARENT OR GUARDIAN) FOREVER WAIVES, DISCHARGES AND RELEASES ANY AND ALL **CLAIMS** WHATSOEVER AGAINST **RACE ORGANIZERS** FOR ANY **DAMAGES** TO ANY PERSON, PROPERTY OR BOAT (I) SUSTAINED IN CONJUNCTION WITH OR PRIOR TO, DURING, OR AFTER EACH RACE, SOCIAL EVENT AND ASSOCIATED ACTIVITIES; OR (II) ARISING, RELATING OR RESULTING FROM USE OF RACE FACILITIES OR PARTICIPATION IN ANY RACE, SOCIAL EVENT OR ASSOCIATED ACTIVITIES, TO THE FULLEST EXTENT PERMITTED BY LAW.

19.4 PARTICIPANT RELEASES ALL **RACE ORGANIZERS** FROM ALL **CLAIMS** ON ACCOUNT OF GIVING ASSISTANCE, AID, CARE, ADVICE, RESCUE, FIRST AID, TREATMENT OR SERVICES.

19.5 OWNERS AND SKIPPERS OF ALL PARTICIPATING BOATS ARE REQUIRED TO INFORM ALL CREWMEMBERS OF THIS DISCLAIMER OF LIABILITY AND RELEASE OF **LIABILITY** AS A CONDITION OF ENTRY.

20. Insurance

20.1 All boats must maintain Liability Insurance in full force and effect during racing which will include a General Liability policy written by a reputable insurance company insuring the owner and any operators against liability for bodily injury in limits of not less than \$300,000 and for property damage of not less than \$100,000. Each boat will present proof of insurance upon OA's request.

21. Publicity and Photographer's Rights

As a condition of participation, each participant (on behalf of him/herself and their children and minors) grants Organizing Authority, sponsors and their designated photographers the perpetual, irrevocable right, license and permission to use, publish and distribute the participant's name, photos, video, images and statements of them and their boat and crew in all forms and media worldwide (including without limitation Internet) for any purposes



whatsoever (including without limitation advertising, promotions, sales of pictures, etc.)
without compensation or further permission



Appendix A – Schedule

Date	Warning	Series – See Note A	Scheduled Races		Comments
			MD JAM	Buoy Multihull	
26-May-18	1100	Spring Series	1*	Up to 2	See Note C
27-May-18	1100	Spring Series	1*	Up to 2	See Note C
28-May-18	1100	Spring Series	1*	Up to 2	See Note C
16-Jun-18	1100	Single/Double Handed	1	1	See Note A
30-Jun-18	1000	Summer Series	1	1	Around the Islands Race
2-Jul-18	Note B	Summer Series	Note B	Note B	Bayfield Race Week
3-Jul-18	Note B	Summer Series	Note B	Note B	Bayfield Race Week
4-Jul-18	Note B	Summer Series	Note B	Note B	Bayfield Race Week
5-Jul-18	Note B	Summer Series	Note B	Note B	Bayfield Race Week
6-Jul-18	Note B	Summer Series	Note B	Note B	Bayfield Race Week
18-Aug-18	1000	Silver Bay Scramble	1	1	See Note A
1-Sep-18	1030	Fall Series	1	1	Bill Hulings Around Madeline Race
2-Sep-18	1100	Fall Series	1*	2	
3-Sep-18	1100	Fall Series	1*	2	
22-Sep-18	1100	Dobson Regatta	1	1	
23-Sep-18	1100	Dobson Regatta	1	1	

*While MD and JAM Fleets are scheduled to sail one race per day, a second race is allowed at the discretion of the RC and/or OA.

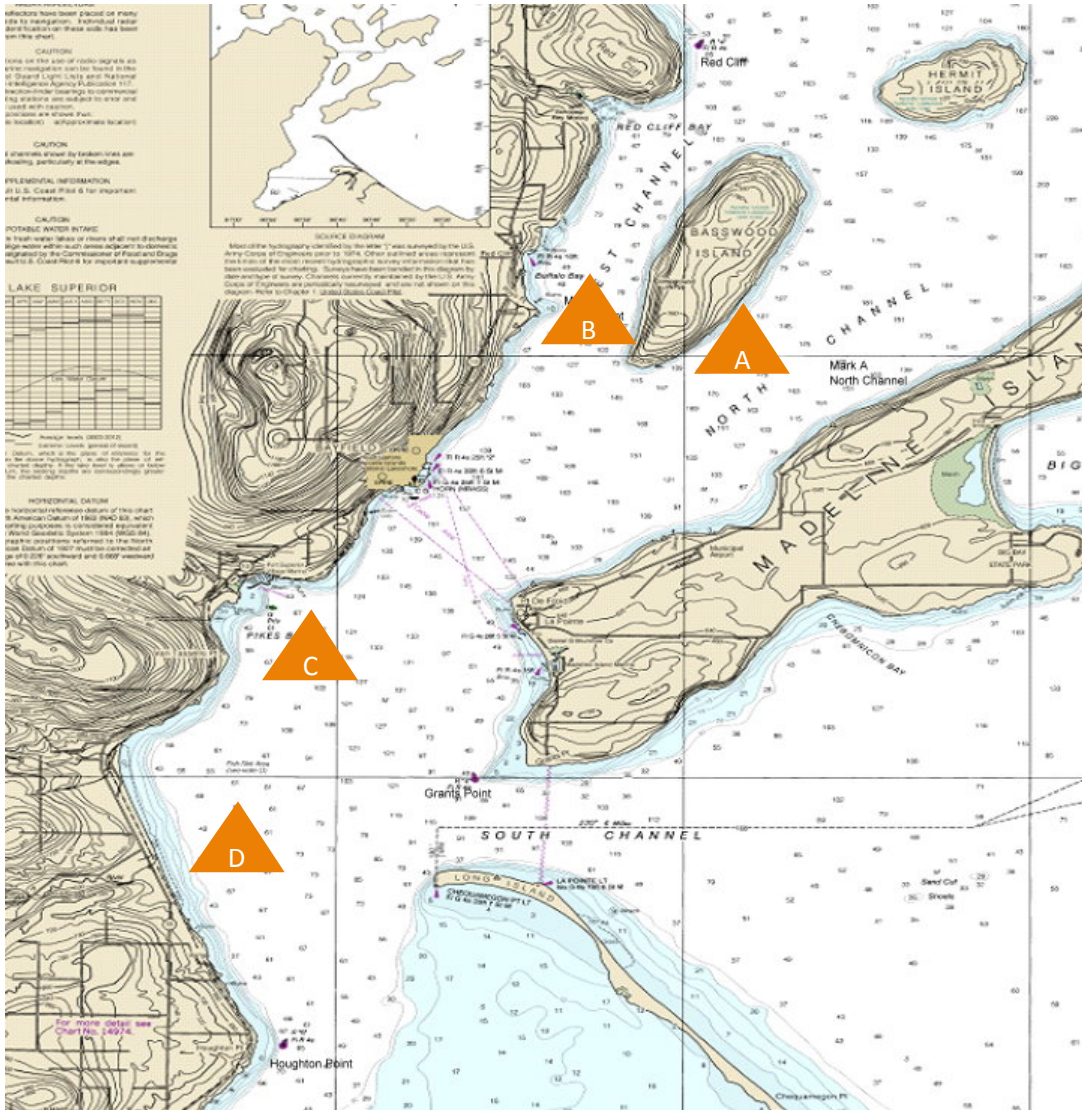
Note A AIS Championship Series is open to all yachts that have paid their WYC and AIS fleet dues for the season. The Championship is a summation of the series points awarded for the Spring, Summer and Fall Series and the Dobson Regatta. See <http://wyc.org/ais/Results.aspx> for cumulative champ series results and calculation method. The Single/Double Handed and Silver Bay races are NOT considered part of the AIS Championship series.

Note B Race schedule (e.g. start times and number of races) during Bayfield Race Week will be specified in Bayfield Race Week Sailing Instructions.

Note C There will be a 1-day medium distance race for all fleets. This race will serve to bring all competitors together on one common course, the exact length of which may be adjusted for some fleets.



Appendix B – Racing Area

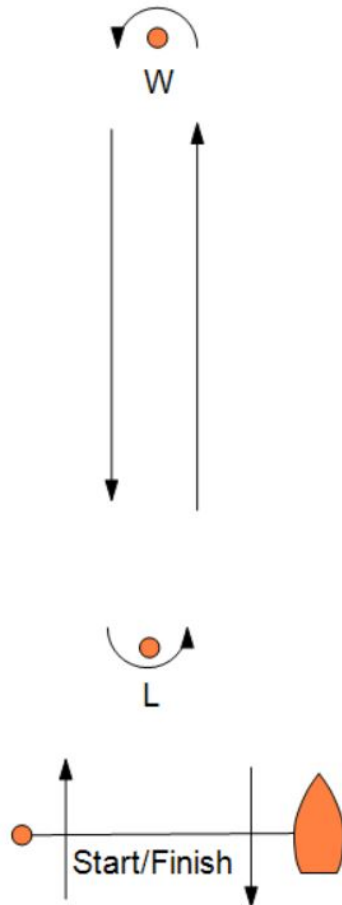


NOTE: Marks A, B, C & D locations are approximate

- Start, finish or any buoy racing marks
- Moveable, temporary inflatable marks
- Any islands such as Basswood or Hermit
- Fixed navigation marks such as Grants Point, Red Cliff or Houghton Point
- North Channel “A” Inflatable Mark
- Roy’s Point “B” Inflatable Mark
- Pikes Bay “C” Inflatable Mark
- Little Sioux River “D” Inflatable Mark



Appendix C - Buoy Course Descriptions



Course Examples:

- Start - W - Finish
- Start - W - L - W - Finish
- Start - W - L - W - L - W - Finish

Any course listed above may be changed to *finish* at the Bayfield Fishing Dock